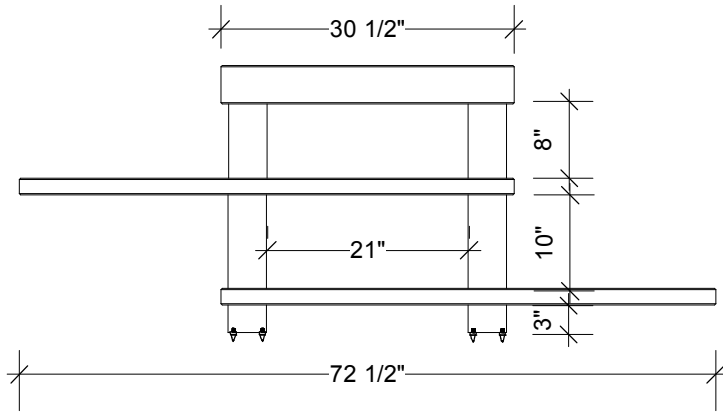
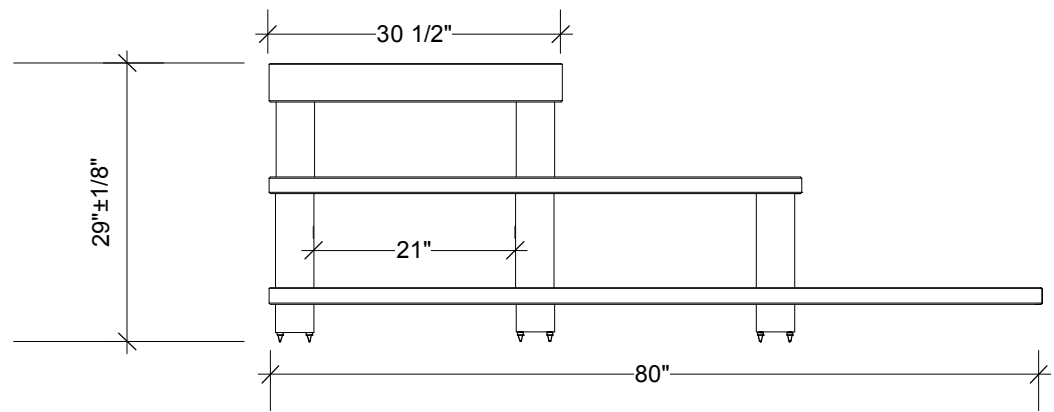


ASSYMMETRICAL CONFIGURATIONS

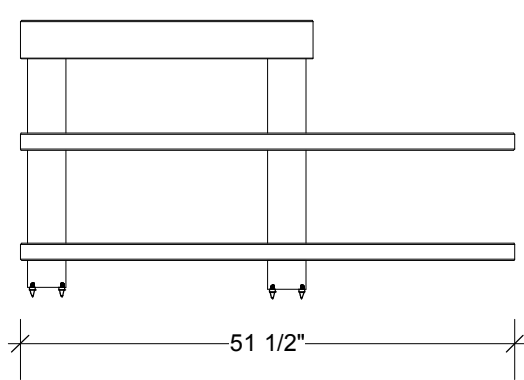
Offset 3-Tier/5-Spaces



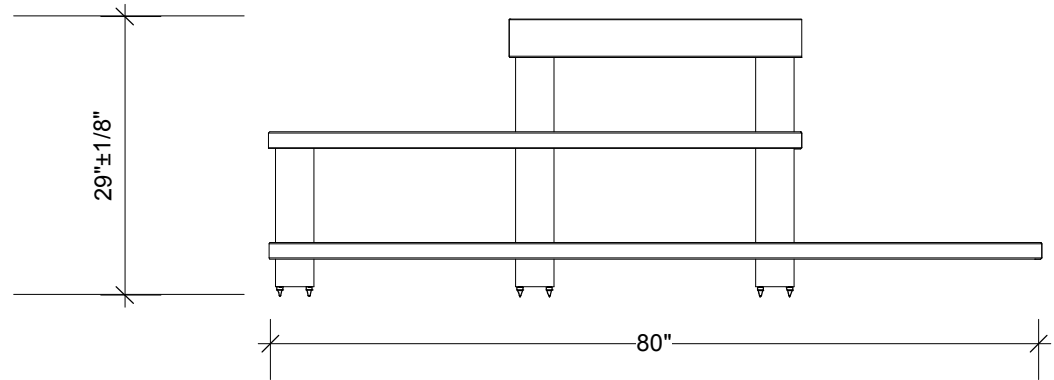
Offset 3-Tier/6-Spaces



Offset 3-Tier/5-Spaces



Offset 3-Tier/6-Spaces



The two Offset 3-Tier/5-Spaces configurations shown above are actually the same unit. You can do either configuration by simply rotating the middle shelf 180°.

The two Offset 3-Tier/6-Spaces configurations shown above are actually the same unit. You can do either configuration by simply moving the top shelf and the two underlying support blocks either to the side or to the center.

The shelf spacing and the overall of the stand is determined by the height of the support blocks. You choose the height starter block (3" is standard), then determine what height your intermediate support blocks need to be based on your equipment.

As a service, utilizing our powerful CAD program, we can offer the customer, for their visualization, a photo-realistic representation of their future stand showing their chosen wood type and finish, and their shelf layout and spacing.